

Association of Missouri Interpreters Conference



**Roaring River State Park
September 15 – 17, 2019**



Table of Contents (links)

- [Keynote Speaker](#)
- [Conference Schedule](#)
- [Session Descriptions](#)
- [Roaring River Map](#)

Cassville Restaurants

- [Sunday, September 15](#)
- [Monday, September 16](#)
- [Tuesday, September 17](#)
- [Emory Melton Inn Layout](#)

Welcome to Roaring River State Park

The 2019 AMI Planning Committee welcomes you to the AMI Annual Conference at Roaring River State Park. Nestled south of the “city of seven valleys” or Cassville MO, Roaring River State Park has a colorful [history](#) prior to becoming a state park in 1928. [A local web site](#) offers the following history:

“Although quiet today, Roaring River State Park was named for its noisy headwaters, which once gushed from a cave at the foot of an overhanging bluff. When the river was dammed for local mills in 1865, it fell silent. After a hatchery stocked the river with trout in 1910, the area became a retreat for fishermen. In 1928, a St. Louis doctor named Thomas M. Sayman bought the 2,400 acres surrounding the spring for \$105,000 during a foreclosure sale. Within a month, he turned around and sold it to the state of Missouri for just \$1. It’s arguably the best dollar the state ever spent: Today, the park is one of the most scenic and popular trout fishing destinations in the Ozarks.”

Whether you are new to AMI or a veteran, we know that the combination of history, networking, sessions, and scenery will inspire you to find new ways of improving your connections to your audiences as you “Let Your Resources Roar!”

2019 AMI Conference Committee

Tim Smith - Chair	Janice Greene
Jessie Ballard	Dana Hoisington
Kim Banner	Kelly Koch
Patricia Chambers	Matt Kantola
Cyndi Cogbill	John Miller
Erica Cox	Kathy Miller
Becky Day	

Emory Melton Inn

Front Desk 417-847-2330

Restaurant Hours: 6:30 am – 9:00 pm

Keynote Speaker

John Cunning



John says his work in parks started when he was four years old, when his family visited the Grand Canyon. He picked up litter in the picnic area and could trade a bag of litter for ice-cream. Throughout his 34-year career with Missouri State Parks, he worked as a historic site manager, a museum director, and as director for the Resource Management and Interpretation Program. In 2013, John was awarded AMI’s Outstanding Professional Interpreter and NAI Region 6’s Distinguished Professional Interpreter. John has helped plan and has been a trainer at the annual Spring Interpreter School for many years. He has presented living history programs as a snake oil salesman in an 1870s medicine show, guided countless historic building tours, interpreted Tom Benton’s capitol mural to Chinese diplomats, and interpreted interpretation to elected and appointed officials. And he loved just about every minute of it.

Now retired, John started a consulting business (Heritage Interpretation Services LLC), works part-time with an estate sale management company, and is planning a few motorcycle trips.

[Back to Table of Contents](#)

Conference Schedule

Saturday, September 14 (Pre-Conference)

12:00 pm Saturday - Sunday 10:00 am
Overnight Backpacking
 8:00am - 4:00 pm **Wonders of Wildlife**
 5:00 - 10:00pm **Eureka Springs & Ghost Tour**

Sunday, September 15

9:30 am-12:30 pm Registration, Donations,
 Vendors, Volunteer **Falls Room**
 1:00 - 1:30 pm **Welcome & Opening**
Riverview Room
 1:30 - 2:30 pm **Keynote – John Cuning**
Riverview Room
 2:30 - 3:00 pm **Break**
 3:00 - 3:45 pm **What is AMI?**
Riverview Room
 3:45 - 4:00 pm **Break before Sessions**
 4:00 - 4:45 pm **Concurrent Sessions #1**
 4:45 - 5:30 pm **Free time and travel**
to Camp Smokey
Shuttles will be available
 5:30 - 7:00 pm **Pizza Supper & Storytelling**
Camp Smokey
 7:00 - 9:00 pm Campfire at **Camp Smokey**
 9:00 - 10:00 pm Smores at **Camp Smokey**
 9:00 pm - 12:00 am Hospitality Room Open
Camp Smokey Dining Hall
 9:00 pm - 12:00 am Jam Session; **Camp Smokey**
Shuttles will be available to return to Inn/Cabins

Monday, September 16 (Field Sessions & Auctions)

All Sessions depart from the lobby of the Inn

Be at the lobby 15 minutes BEFORE departure!

7:30 am - 5:00 pm Springfield Botanical Garden
 7:30 am - 5:00 pm Shoal Creek Education
 8:00 am - 5:00 pm Ozark Mountain & Milking History
 8:30 am - 12:00 pm Dye Tracing & Cave Mapping
 1:00 - 4:30 pm Cave Mapping and Dye Tracing
 5:00 - 6:00 pm **Free Time, Clean up**
 6:00 - 7:00 pm **Dinner (heavy Hors d'oeuvres)**
Riverview Room

Monday continues on next column

Monday, September 16 (CONTINUED)

6:00 - 7:15 pm **Silent Auction Riverview Hallway**
 7:30 - 9:00 pm Live Auction **Riverview Room**
 9:00 pm - 12:00 am Hospitality **Camp Smokey**
 9:00 pm - 12:00 am Jam Session **Camp Smokey**
Shuttles will be available to return to Inn/Cabins

Tuesday, September 17

8:00 - 8:45 am **Concurrent Sessions #2**
 8:45 - 9:00 am **Break between Sessions**
 9:00 - 9:45 am **Concurrent Sessions #3**
 9:45 - 10:15 am **Break between Sessions**
 10:15 - 11:00 am **Concurrent Sessions #4**
 11:00 - 11:15 am **Break between Sessions**
 11-15 am - 12:00 pm **Concurrent Sessions #5**
 12:00 - 1:00 pm **Lunch Riverview Room**
 1:00 - 3:00 pm Business Meeting
Riverview Room
 3:00 - 3:30 pm **Break**
 3:30 - 5:00 pm AMI Interpreters Quiz
Firetower Room
 5:00 - 6:30 pm **Free Time**
 6:30 - 9:00 pm **Banquet Riverview Room**
 9:00 pm - 1:00 am Hospitality **Camp Smokey**
 9:00 pm - 1:00 am Jam Session **Camp Smokey**
Shuttles will be available to return to Inn/Cabins

Wednesday, September 18 (Depart)

10:00 am Clean and Leave **Camp Smokey**
 11:00 am Check out of Inn Rooms/Cabins

Safe Travels to All

[Session Descriptions](#)

[Click here to see all session descriptions](#)



LOADING AN OZARK TROUT FROM ROARING RIVER. Photo Shop Cassville, Mo. 24

[Return to Table of Contents](#)

Sunday, September 15, 2019

TIME	Riverview Main Floor	Inn Lobby Main Floor	Fire Tower Downstairs	Deer Leap Downstairs	Camp Smokey Group Camp
9:30 am - 12:30 pm		Register, Donate, Volunteer Falls Room			
1:00 – 1:30 pm	Opening and Welcome Remarks				
1:30 – 2:30 pm	Keynote Speaker: John Cunning				
2:30 – 3:00 pm	BREAK and VENDORS				
3:00 – 3:45 pm	What is AMI?				
3:45 – 4:00 pm	BREAK and VENDORS				
4:00 – 4:45 pm	AMI wants YOU! - AMI Officers past and present	Go Outside! How to Encourage Meaningful Learning – Jamin Bray	See Your Resources Fly! (1 st half) - Paige Witek	Coming to Know this Place – Jo Schaper	
4:45 – 5:30 pm	Travel to Camp Smokey – Shuttles Available				
5:30 – 7:00 pm					Pizza Supper
7:00 – 9:00 pm					Campfire and Stories from AMI Elders
9:00–10:00 pm					Smores
9:00 pm – Midnight	Don't forget to grab your breakfast items tonight for Monday morning.				Hospitality Room Open – Dining Hall
9:00 pm – Midnight					Jam Sessions
	Shuttles between Camp Smokey & Inn/Cabins available				

Congratulations to our 2019 AMI Undergraduate Scholarship Winners:

Marissa Ginger

University of Central Missouri
(Warrensburg, MO)

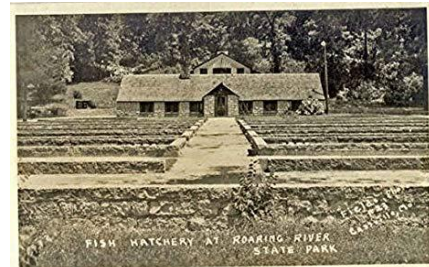
Anna Skalicky

Macalester College
(St. Paul, MN)

[Back to Table of Contents](#)

Monday, September 16, 2019

TIME	Riverview Main Floor	Field Sessions Be in Lobby 15 minutes before Leaving	Camp Smokey Group Camp
7:30 am – 5:00 pm		Shoal Creek Education	
7:30 am – 5:00 pm		Springfield Botanical Gardens	
8:00 am – 5:00 pm		Ozark Mountain State Park	
8:00 am – 5:00 pm		Milking History	
8:30 am - 12:00 pm		Cave Mapping – Morning Session	
8:30 am - 12:00 pm		Dye Tracing – Morning Session	
1:00 – 4:30 pm		Cave Mapping – Afternoon Session	
1:00 – 4:30 pm		Dye Tracing – Afternoon Session	
5:00 – 6:00 pm	FREE TIME & CLEAN UP		
6:00 – 7:00 pm	Dinner (heavy Hour d'oeuvres)		
6:00 – 7:15 pm	Silent Auction Lobby Outside Riverview Room		
7:30 – 9:00 pm	Live Auction Your bid goes to Scholarships and Professional Development Bid HIGH and Bid OFTEN		
	Shuttles between Camp Smokey & Inn/Cabins available		
9:30 pm – Midnight			Hospitality Room Open
9:00 – Midnight			Jam Sessions



[Back to Table of Contents](#)

Tuesday, September 17, 2019

TIME	Riverview Main Floor	Falls Main Floor	Fire Tower Downstairs	Deer Leap Downstairs	Camp Smokey Group Camp
8:00 – 8:45 am	See Your Resources Fly! (2 nd half) - Paige Witek	Reorganizing & Reimagining Your Resources - Nicki Wheaton	Planning Successful Exhibits (1 st half) - Lisa May	Introduction to Digital Photography - Eugene Vale	
8:45 – 9:00 am	BREAKS and VENDORS				
9:00 – 9:45 am	Connecting Communities with Storytelling - Jim Two Crows Wallen, Joyce Slater	Utilizing iNaturalist: A citizen science opportunity (1 st half) - Shelly Colatskie, Jessie Dockins, Austin Lambert	Planning Successful Exhibits (2 nd half) - Lisa May	Discovering Aquatic Insects with a Fly Tyer's Eye (1 st half) - Sam Stewart	
9:45 - 10:15 am	BREAKS and VENDORS				
10:15 - 11:00 am	CSI: Conservation Scene Investigation (1 st half) - Rebecca Rodriguez	Utilizing iNaturalist (2 nd half) - Shelly Colatskie, Jessie Dockins, Austin Lambert	Missouri Green Schools - Jan Weaver	Discovering Aquatic Insects with a Fly Tyer's Eye (2 nd half) - Sam Stewart	
11:00 - 11:15 am	BREAKS and VENDORS				
11:15 am - 12:00 pm	CSI: Conservation Scene Investigation (2 nd half) - Rebecca Rodriguez			Becoming a Program Transformer - Michelle Soenksen	
12:00 - 1:00 pm	Lunch (buffet)				
1:00 – 3:00 pm	AMI Business Meeting				
3:00 – 3:30 pm	BREAKS and VENDORS				
3:30 – 5:00 pm			AMI Quiz Fun for All!		
5:00 – 6:30 pm	Free Time				
6:30 – 9:00 pm	Awards Banquet				
	Shuttles between Camp Smokey & Inn/Cabins available				
9:00 pm – 1:00 am					Hospitality Room Open
9:00 pm – 1:00 am	Back to Table of Contents				Jam Sessions

Concurrent Session Descriptions

AMI wants YOU! - AMI Officers (Current & Past)

AMI not just wants but needs you to help carry on the traditions. What does it take to be involved and how much time does it take? Visit with some of the officers about duties and responsibilities of AMI offices and committees.

Go Outside! How to Encourage Meaningful Learning

– Jamin Bray

Why does learning have to be such a chore? Well, it doesn't! Reveal meanings more effectively by inspiring emotional connections with your topic. We will share our tricks for both interpreters and teachers of any subject. Be ready to be immersed in the resource-yes, we might get dirty! Yay!

See Your Resources Fly! – Paige Witek

(Two 45-min sessions)

Join us to find out how birds and the Missouri River Bird Observatory can be your resource! You will learn how to identify birds, fun facts about Missouri's birds, how to use eBird, and how MRBO can help. We will also practice our new ID skills by going birding outside.

Coming to Know This Place – Jo Schaper

*"We shall not cease from exploration
And the end of all our exploring
Will be to arrive where we started
And know the place for the first time."*

T.S. Elliot.

This session uses simple objects and experiences to open a site, time period, exhibit or landscape to visitors using sensory short, creative challenges.

Reorganizing and Reimagining Your Resources

– Nicki Wheaton

Do you have trouble with storage? Do you struggle with coming up with fun and inventive ways to use materials you already have? If you answered yes to either of these, then this session is for you. We will discuss smart storage tips and transition into ways to use our sites' resources wisely.

Planning Successful Exhibits –Lisa May (Two 45-min sessions)

Explore the exhibit design process and walk through the steps needed to make a successful exhibit. Learn about exhibit planning, different exhibit formats and fabrication, and how to write effective interpretive text. Ending with a fun exhibit design game to help set your creativity free from the constraints of planning.

Introduction to Digital Photography – Eugene Vale

Are you ready to move beyond taking selfies with your smart phone? This presentation is for the beginning photographer. It will cover the basics of taking pictures, and the features to look for in a camera for taking pictures. Particularly useful features of digital SLRs will be pointed out and discussed.

Connecting Communities with Storytelling

– Jim Two Crows Wallen & Joyce Slater

The presenter will discuss the state parks and historic sites connection with Missouri Storytelling Inc through storytelling at the various sites. A story will be presented, and the participants will learn to share a story with the group.

Using iNaturalist: A Citizen Science Opportunity

– Shelly Colatskie, Jessie Dockins, Austin Lambert

(Two 45-min sessions)

Interested in learning how you can become a citizen scientist? This program will focus on how to use iNaturalist to help monitor the biodiversity of a specific area. Digital camera, smartphone, tablet or laptop computer are highly recommended, as we will be using this technology to collect and submit nature observations in iNaturalist

Discovering Aquatic Insects with a Fly Tyer's Eye

– Sam Stewart (Two 45-min sessions)

Under a river rock lies a busy world of activity. Aquatic insects and other strange creatures carry out their lives with little ado. As a fly tyer however, this world is an important one. Join us to learn how you can interpret these aquatic insects at your site and tie your very own fly!

CSI: Conservation Scene Investigation

– Rebecca Rodriguez (Two 45-min sessions)

A conservation crime has been committed! Uncover the mystery by engaging in scientific investigations to determine what really happened. Discover how conservation agents and biologists use evidence to solve crimes against nature with hands-on investigations and lab tests. Attendees will learn about this new program at Powder Valley that focuses on the application of observations and inquiry to enhance authentic learning through conservation careers.

Missouri Green Schools – Jan Weaver

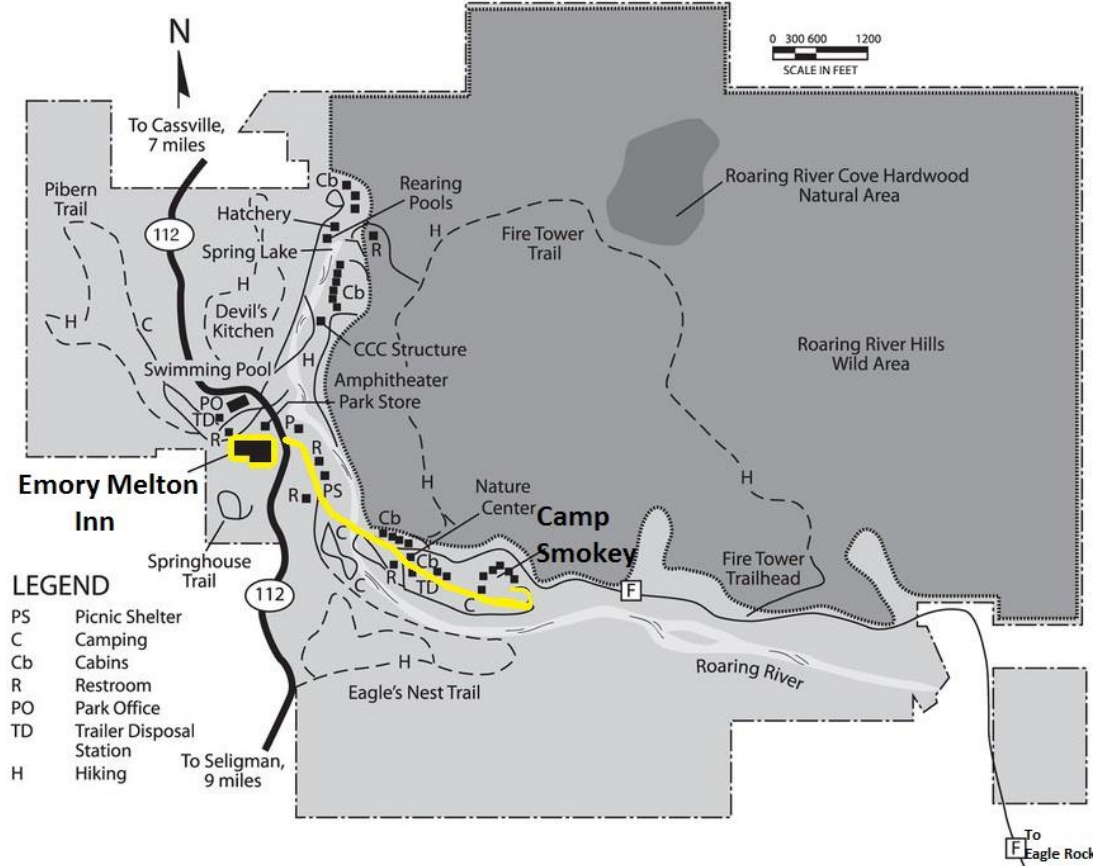
Presentation Description: Missouri Green Schools recognizes the green steps schools have taken and helps them take more steps. The program is organized around three pillars – sustainability, health, and learning. Learn how outdoor and conservation educators can play an important role in helping schools achieve in all three pillars.

Becoming a Program Transformer – Michelle Soenksen

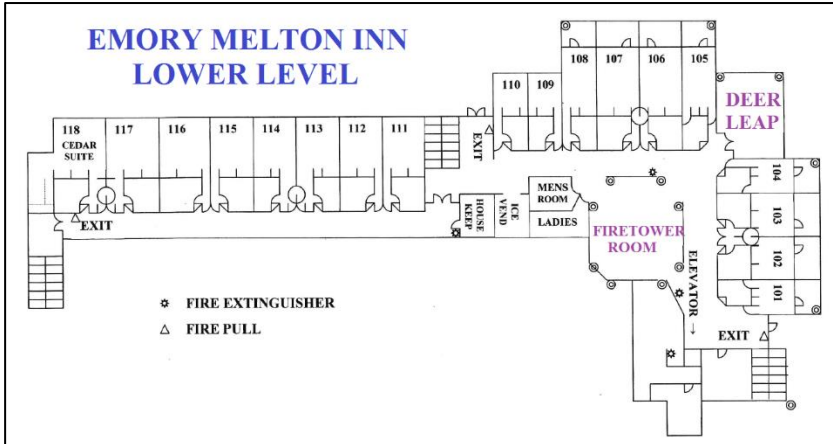
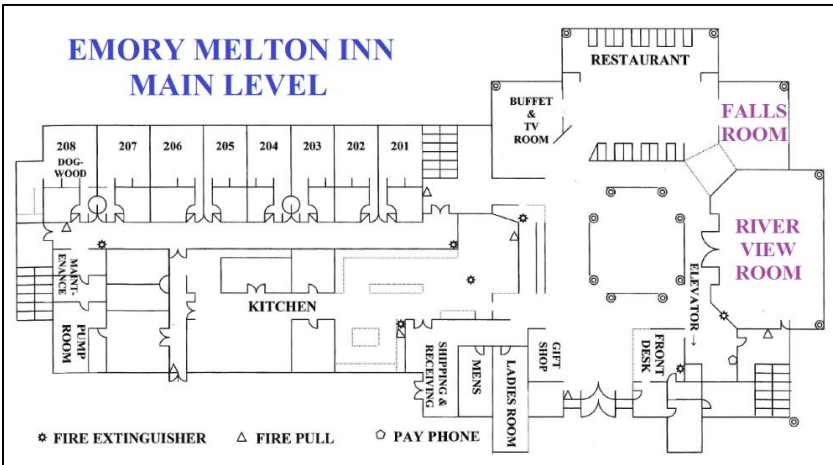
Holding the interest of our audience can be a challenge in this fast-paced, technological world. How do you keep their attention? Does your program have to include costumes, puppets and characters to entertain? See how four programs are transformed into interesting and interactive presentations and learn new ways to transform your own.

[Return to Table of Contents](#)

Roaring River State Park Map



Emory Melton Inn Floor Plans



THANK YOU DONORS !
 We appreciate the contribution of these **DONORS** for their support of our Conference:

- Acorn Naturalist
- Cassville Chamber of Commerce
- Jeff Cantrell
- Conner Prairie
- Dickerson Park Zoo
- GeoCommunications
- AJ Hendershott
- Vicky Harding
- Kansas City Zoo
- MO Conservation Federation
- Wink Mitchell
- MO History Museum
- MO State University
- MO Parks INC
- Mothers Brewery
- Nature Watch
- NW Arkansas Naturals
- Ozark Chinquapin Foundation
- Pawpaw Patch Productions
- Powell Gardens
- Ralph Foster Museum
- Andy Rhodes
- Roaring River SP
- Jim & Carmen Rogers
- Rusty Scarborough
- Shoal Creek Cons. Education Center
- Springfield Nature Center
- Tulsa Zoo

[Return to Table of Contents](#)